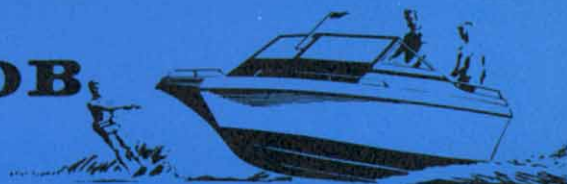




## AQ 115A/100B



4-cylinder, 4-stroke carburetor engine with model 100B outboard drive

### STANDARD EQUIPMENT

**ENGINE BODY** — Cylinder block and head made of special cast iron. Light-alloy pistons with 2 compression rings and one oil scraper ring. Crankshaft journalled in 5 bearings. Self-rotating, overhead valves. A tool kit for minor adjustment is supplied.

**FUEL SYSTEM** — Downdraft carburetor with acceleration pump (1). Fuel pump (9) driven from camshaft, equipped with hand primer and flexible hose with fuel pipe connection.

**COOLING SYSTEM** — Thermostat-controlled sea-water cooling system. Sea-water pump with neoprene rubber impeller (8). Cleanable sea-water filter (14).

**LUBRICATING SYSTEM** — Pressure-lubricating system with full-flow lubricating oil filter of the spin-on type (4). Sealed crankcase ventilation (10). Cleanable, tubular-type oil cooler (5).

**INTAKE SYSTEM** — Flame arrester of approved type with connection for crankcase ventilation (7).

**EXHAUST SYSTEM** — Sea-water cooled exhaust manifold and manifold elbow of cast iron (16). Complete exhaust line with connections and exhaust boot (3).

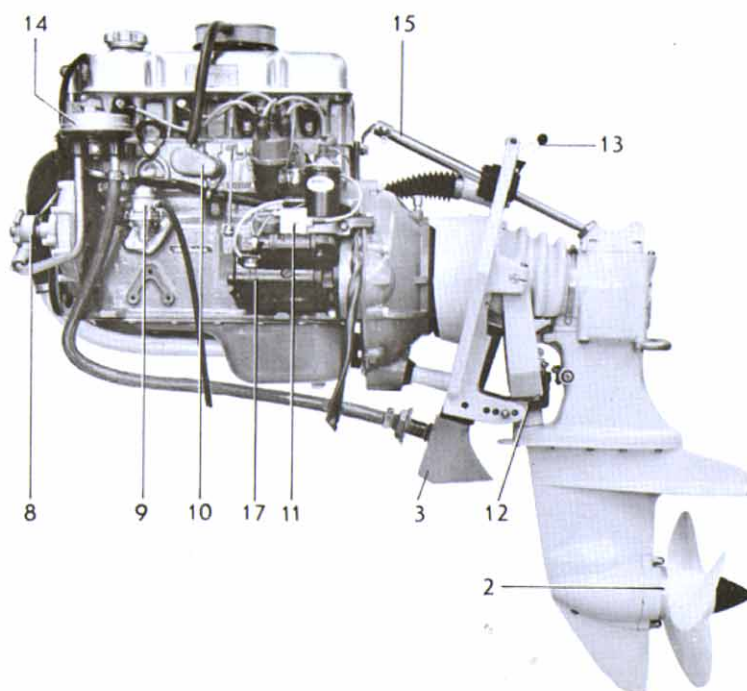
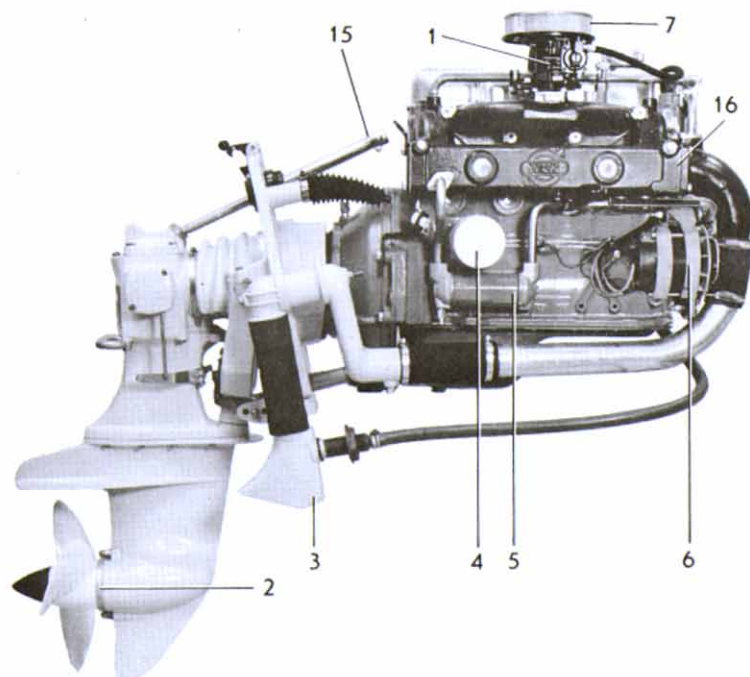
**ELECTRICAL SYSTEM** — Corrosionproof 12 V electrical system, with complete instrument panel (see reverse side). Main fusing mounted on engine with built-in spare fuses (11). Brushless alternator with built-in transistor regulator, 35 A, 420 W (6). Starter motor output 735 W (1 h.p.) (17).

**OUTBOARD DRIVE** — Complete with mounting collar, rubber-suspended flywheel casing and installation parts. All gears are of the helical spur type.

Cone clutch (patented) of Silent Shift type makes for reliable operation and quiet engagement with small manoeuvring forces.

The drive can be tilted up 60°.

Steering arm (15) with connecting for steering cable. Protection ring of zinc which prevents corrosion (2). Exhaust boot for separate mounting on transom with combined cooling water intake and exhaust outlet (3). Reversing pawl (12) which effectively locks the drive when reversing. It also permits the drive to tilt up when striking underwater obstacles. Pawl for locking the drive in tilted-up position (13).



## EXTRA EQUIPMENT

### FUEL SYSTEM

Water-separating filter with or without flexible hoses.  
Fuel line kit with copper piping and installation parts.  
Electrically operated fuel pump

### COOLING SYSTEM

Extra cooling water intake for fitting on transom.

### ELECTRICAL SYSTEM AND INSTRUMENT

Charging distributor for charging 2-battery system  
Electric-hourmeter  
Master switch  
Cable harness extension  
Instrument panel for extra instruments  
Automatic alarm for oil pressure and water temperature

### ENGINE MOUNTING

Flexible front engine mounting

### OUTBOARD DRIVE

Extensions for outboard drive  
Electro-hydraulic lift device

### BOAT ACCESSORIES

Electrically operated bilge pump  
Original paint  
Oils  
Electro-mechanical trim tabs  
On board kits

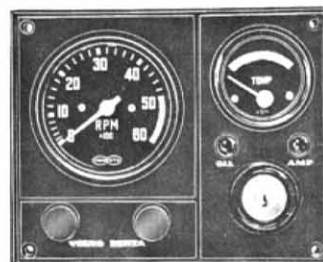
### CONTROLS AND CONTROL SYSTEM

VP single-control lever for both speed and forward-reverse operation, top-mounted or side-mounted. Single or twin installation.  
Neutral-position switch — automatic safety interlock for VP-controls  
Dual station control unit  
Push-pull controls  
Control cables  
Steering gears  
Steering wheels  
Steering cables  
Reduction kit for steering arm  
Clevis kit for steering cable

### AQUAMATIC PROPELLERS

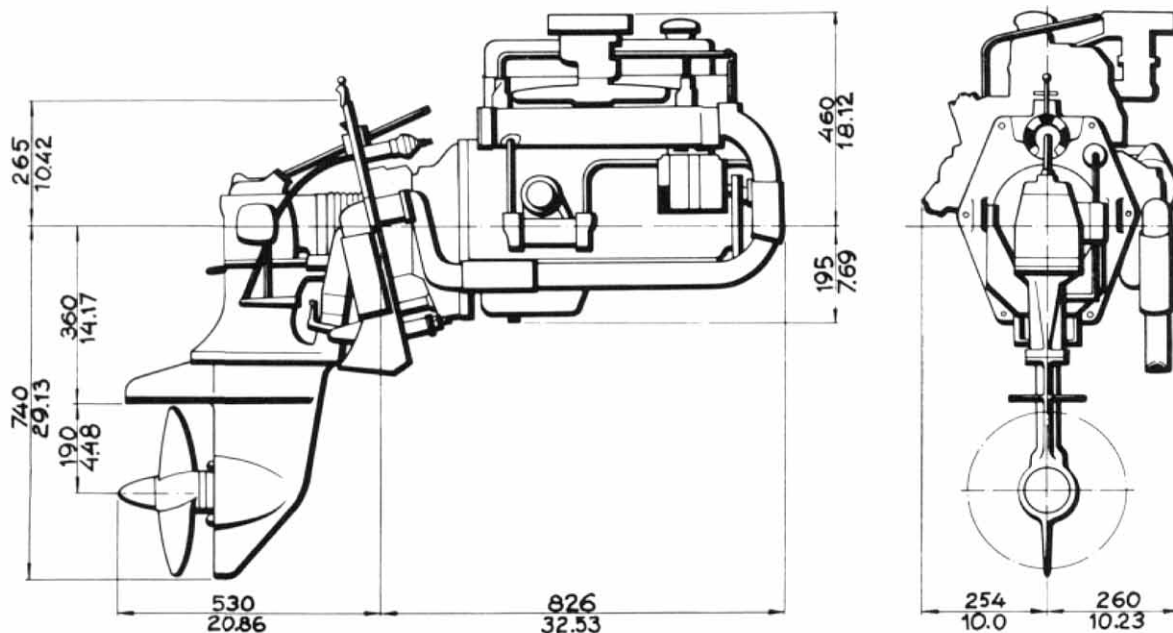
## DATA

Type of operation	4-stroke carburetor engine with overhead valves
Designation	AQ115A/100B
Max. operating speed, r/s (rpm)	91.7 (5500)
Number of cylinders	4 in-line
Capacity, dm <sup>3</sup> (in <sup>3</sup> )	1.986 (121)
Bore/Stroke, mm (in)	88.9/80 (3.50/3.15)
Compression ratio	9.5:1
Fuel quality	min. 97 octane
Outboard drive, type design. and red.	100B/1.66:1
Total weight, kg (lb), approx.	210 (460)



Instrument panel, which is included in standard equipment, is provided with key switch, rev counter, temperature gauge, warning lamps for battery charging and oil pressure, switch for instrument lighting and one extra switch. Cable harness, 7 m (23 ft.) in length, with plug-in contact.

## DIMENSION DRAWING



## AB VOLVO PENTA

Box 392, S-401 26 Gothenburg 1, Sweden  
Telephone: 031/23 54 60  
Telegrams: Penta  
Telex: 207 55

We reserve the right to carry out modifications

