



AQ 115 B / 100 B



4-cylinder, 4-stroke carburetor engine with model 100B outboard drive

STANDARD EQUIPMENT

ENGINE BODY — Cylinder block and head made of special cast iron. Light-alloy pistons with 2 compression rings and one oil scraper ring. Crankshaft journalled in 5 bearings. Self-rotating, overhead valves. A tool kit for minor adjustment is supplied.

FUEL SYSTEM — Downdraft carburetor with acceleration pump (1). Fuel pump (9) driven from camshaft, equipped with hand primer and flexible hose with fuel pipe connection.

COOLING SYSTEM — Thermostat-controlled sea-water cooling system. Sea-water pump with neoprene rubber impeller (8). Cleanable sea-water filter (14).

LUBRICATING SYSTEM — Pressure-lubricating system with full-flow lubricating oil filter of the spin-on type (4). Sealed crankcase ventilation (10). Cleanable, tubular-type oil cooler (5).

INTAKE SYSTEM — Flame arrester of approved type with connection for crankcase ventilation (7).

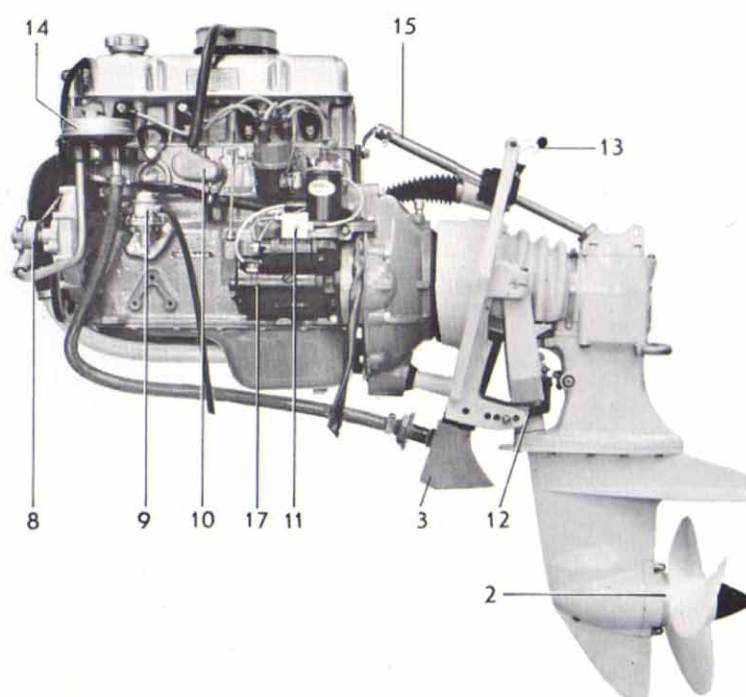
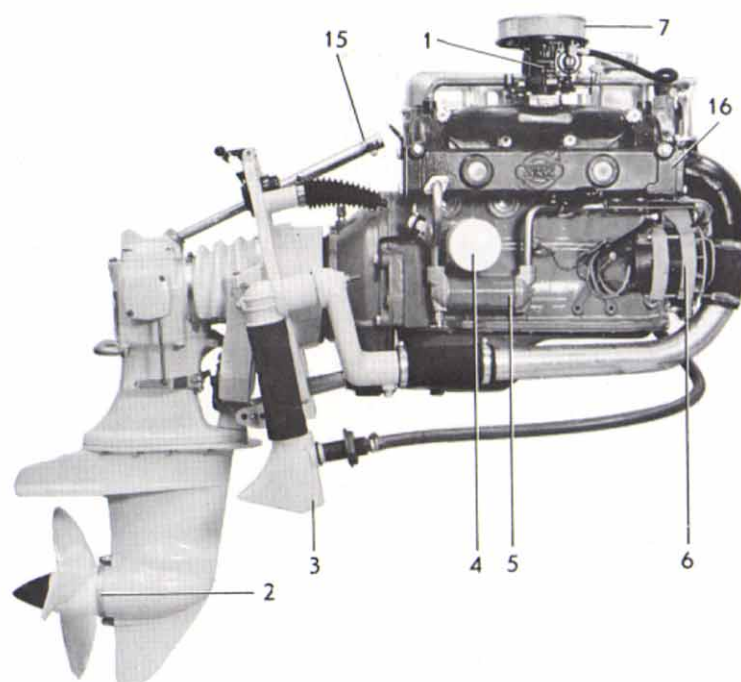
EXHAUST SYSTEM — Sea-water cooled exhaust manifold and manifold elbow of cast iron (16). Complete exhaust line with connections and exhaust boot (3).

ELECTRICAL SYSTEM — Corrosionproof 12 V electrical system, with complete instrument panel (see reverse side). Main fusing mounted on engine with built-in spare fuses (11). Brushless alternator with built-in transistor regulator, 35 A, 420 W (6). Starter motor output 735 W (1 h.p.) (17).

OUTBOARD DRIVE — Complete with mounting collar, rubber-suspended flywheel housing and installation parts. All gears are of the helical cut bevel type. Cone clutch (patented) of Silent Shift type provides reliable operation and quiet engagement with small manoeuvring forces.

The drive can be tilted up 60°.

Steering arm (15) with connecting for steering cable. A self sacrificing zinc anode protects the outboard drive against corrosion (2). Exhaust boot for separate mounting on transom with combined cooling water intake and exhaust outlet (3). Reversing pawl (12) which effectively locks the drive when reversing. It also permits the drive to kick up when striking underwater obstacles. Pawl for locking the drive in tilted-up position (13).



EXTRA EQUIPMENT

FUEL SYSTEM

Water-separating filter with or without flexible hoses.
Water separator.
Fuel line kit with copper piping and installation parts.
Cover for fuel tank with connection parts.

COOLING SYSTEM

Extra cooling water intake for fitting on transom.

ELECTRICAL SYSTEM AND INSTRUMENT

Charging distributor for charging 2-battery system.
Extra instruments: Hourmeter, fuel- and water gauge, voltmeter, oil pressure gauge, rudder indicator.
Master switch.
Cable harness extension.
Instrument panel for extra instruments.

Automatic alarm for oil pressure and water temperature

ENGINE MOUNTING

Flexible front engine mounting

OUTBOARD DRIVE

Extensions for outboard drive
Electro-hydraulic lift device

BOAT ACCESSORIES

Electrically operated bilge pump
Original paint
Oils
Electro-mechanical trim tabs
On board kits

CONTROLS AND CONTROL SYSTEM

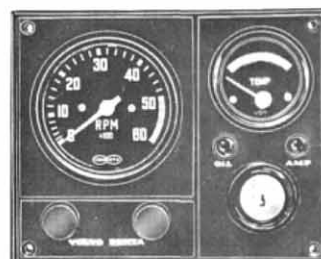
VP single-control lever for both speed and forward-reverse operation, top-mounted or side-mounted. Single or twin installation.
Control cables
Steering gears
Steering lock
Steering wheel
Steering cables
Reduction kit for steering arm
Clevis kit for steering cable

AQUAMATIC PROPELLERS

DATA

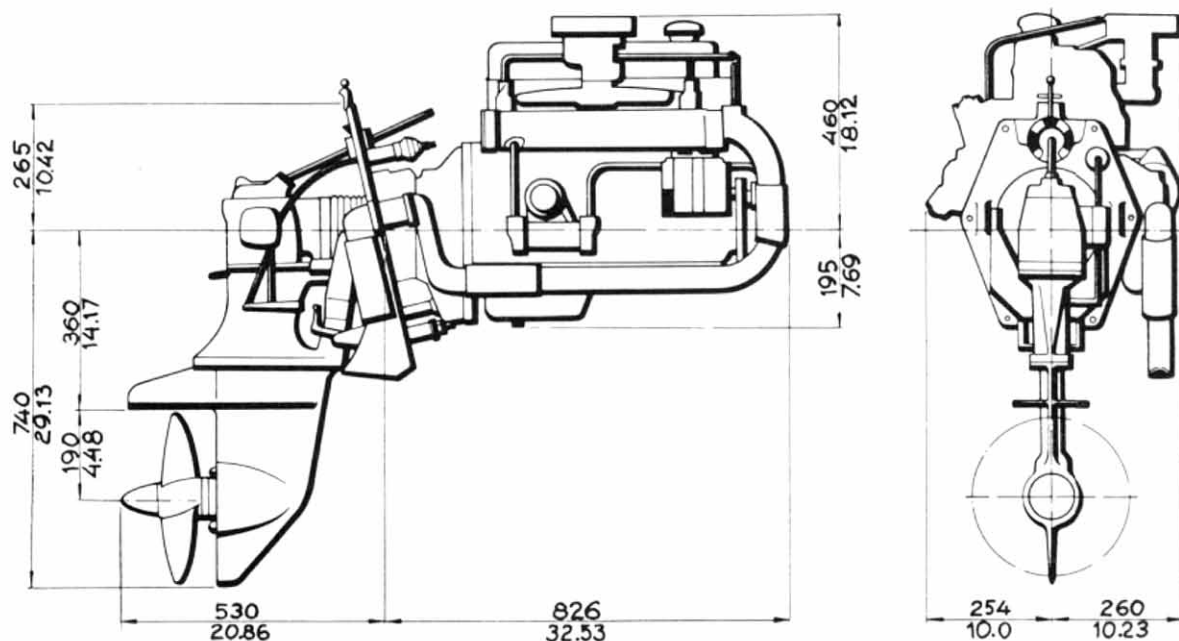
Type of operation	4-stroke carburetor engine with overhead valves
Designation	AQ115B/100B
Max. operating speed, r/s (rpm)	91.7 (5500)
Number of cylinders	4 in-line
Capacity, dm ³ (in ³)	1.986 (121)
Bore/Stroke, mm (in)	88.9/80 (3.50/3.15)
Compression ratio	9.0:1
Fuel quality ¹⁾	min. 90 octance
Outboard drive, type design. and red.	100B/1.66:1
Total weight, kg (lb), approx.	210 (460)

¹⁾ The engine can be run on unleaded fuel.



Instrument panel, which is included in standard equipment, is provided with key switch, rev counter, temperature gauge, warning lamps for battery charging and oil pressure, switch for instrument lighting and one extra switch. Cable harness, 7 m (23 ft.) in length, with plug-in contact.

DIMENSION DRAWING



AB VOLVO PENTA

S 405 08 Gothenburg, Sweden
Telephone: 031/23 54 60
Telegrams: Penta
Telex: 207 55

We reserve the right to carry out modifications

