



AQ 170C/280



6-cylinder, 4-stroke carburetor engine with model 280C outboard drive

STANDARD EQUIPMENT

ENGINE BODY — Cylinder block and head made of special cast iron. Light-alloy pistons with 2 compression rings and one oil scraper ring. Crankshaft journalled in 7 bearings. Self-rotating, overhead valves. A tool kit for minor adjustment is supplied.

FUEL SYSTEM — Three downdraft carburetors with acceleration pumps (1) coupled in parallel. Fuel pump (3) driven from camshaft, equipped with hand primer and flexible hose with fuel pipe connection.

COOLING SYSTEM — Thermostat-controlled sea-water cooling system. Sea-water pump (4) with neoprene rubber impeller and circulation pump for effective cooling. Cleanable sea-water filter (5).

LUBRICATING SYSTEM — Pressure-lubricating system with full-flow lubricating oil filter of the spin-on type (6). Sealed crankcase ventilation (17). Cleanable, tubular-type oil cooler (7).

INTAKE SYSTEM — Silent Flow type intake silencer with built-in flame guard (2).

EXHAUST SYSTEM — Sea-water cooled exhaust manifold and manifold elbow of cast iron (8). Complete exhaust line for connection to drive.

ELECTRICAL SYSTEM — Corrosionproof 12 V electrical system, with complete instrument panel (see reverse side). Main fusing mounted on engine with built-in spare fuses (10). Brushless alternator with built-in transistor regulator, 35 A, 420 W (6). Starter motor output 735 W (1 h.p.) (18).

FRONT ENGINE MOUNTING — Support member with rubber mounting (11).

OUTBOARD DRIVE — Complete with mounting collar, rubber-suspended flywheel housing and installation parts. All gears are of the helical cut bevel type, designed for continuous operation in either direction of rotation.

Cone clutch (patented) of Silent Shift type provides reliable operation and quiet engagement with small manoeuvring forces.

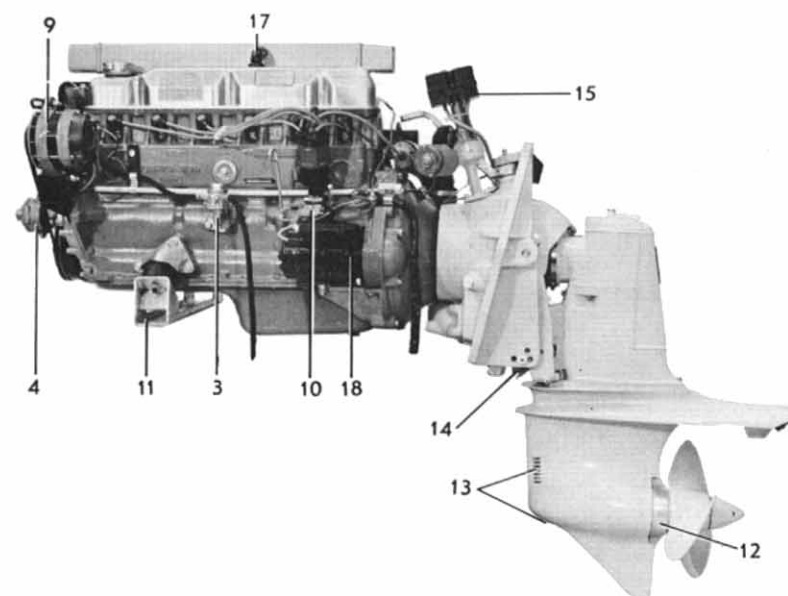
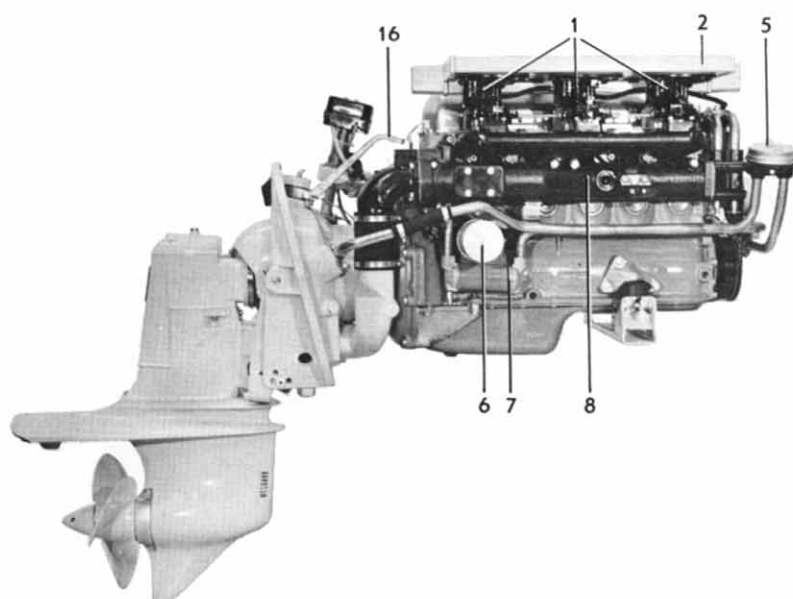
The drive can be tilted up 60°.

The shift mechanism has an easily adjustable link rod for altering the propeller direction of rotation from left-hand to right-hand.

Steering arm (16) with connection for steering cable. Two self sacrificing zinc anodes protect the outboard drive against corrosion (12). Cooling water intake at front and bottom of drive for cooling water supply to engine (13).

Reversing pawl (14) of patented design permits the drive to kick up when striking underwater objects. Yet holding the drive in downward position when going in reverse or pulling back the throttle rapidly in forward motion.

Electro-mechanical power tilt (15) with completely plastic embedded electrical system.



EXTRA EQUIPMENT

FUEL SYSTEM

Water-separating filter with or without flexible hoses
Water separator
Fuel line kit with copper piping and installation parts.
Cap with connections for fuel tank.

COOLING SYSTEM

Extra cooling water intake for fitting on transom.

ELECTRICAL SYSTEM AND INSTRUMENT

Charging distributor for charging 2-battery system
Extra instruments: Hourmeter, fuel- and water gauge, voltmeter, oil pressure gauge, rudder indicator
Master switch

Cable harness extension
Instrument panel for extra instruments
Automatic alarm for oil pressure and water temperature

OUTBOARD DRIVE

Extensions for outboard drive

BOAT ACCESSORIES

Electrically operated bilge pump
Original paint
Oils
Electro-mechanical trim tabs
On board kits

CONTROLS AND CONTROL SYSTEM

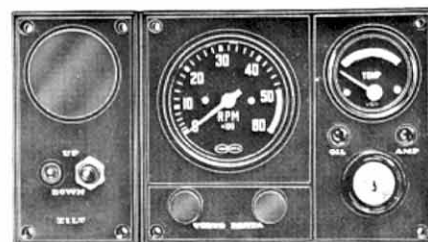
VP single-control lever for both speed and forward-reverse operation, top-mounted or side-mounted. Single or twin installation
Dual station control unit
Control cables
Steering cables
Steering lock
Steering wheel
Ball joint for steering cable
Tie-bar kit for twin installation

AQUAMATIC PROPELLERS

DATA

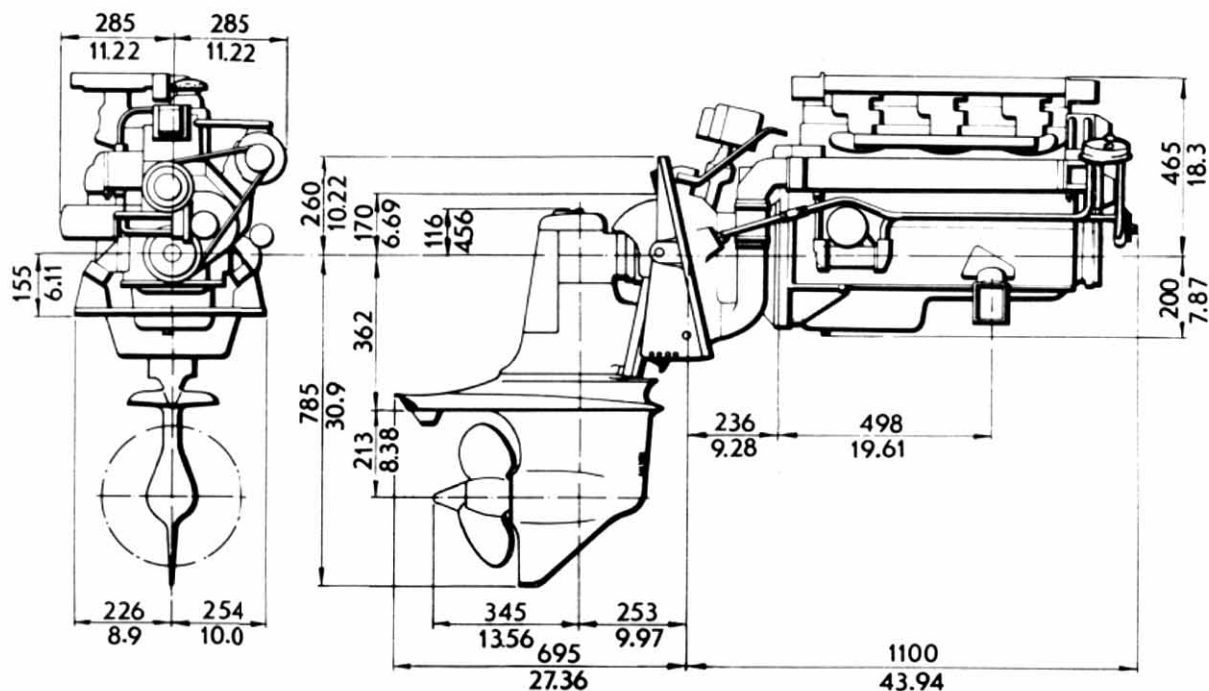
Type of operation	4-stroke carburetor engine with overhead valves
Designation	AQ170C/280C
Max. operating speed, r/s (rpm)	.83.3 (5000)
Number of cylinders	6 in-line
Capacity, dm ³ (in ³)	2.979 (182)
Bore/Stroke, mm (in)	88.9/80 (3.50/3.15)
Compression ratio	9.0:1
Fuel quality ¹⁾	min 90 octane
Outboard drive, type design. and red.	280C/1.89:1
Total weight, kg (lb), approx.	320 (705)

1) The engine can be run on unleaded fuel.



Instrument panel, which is included in standard equipment, is provided with key switch, rev counter, temperature gauge, warning lamps for battery charging and oil pressure, switch for instrument lighting and one extra switch. Cable harness, 7 m (23 ft.) in length, with plug-in contact.
Separately installed operating switch and control light for drive lift as well as a 7 m (23 ft.) long electric cable harness with plug-in contact is supplied.

DIMENSION DRAWING



AB VOLVO PENTA

S 405 08 Gothenburg, Sweden
Telephone: 031/23 54 60
Telegrams: Penta
Telex: 207 55

We reserve the right to carry out modifications