

# AQUAMATIC

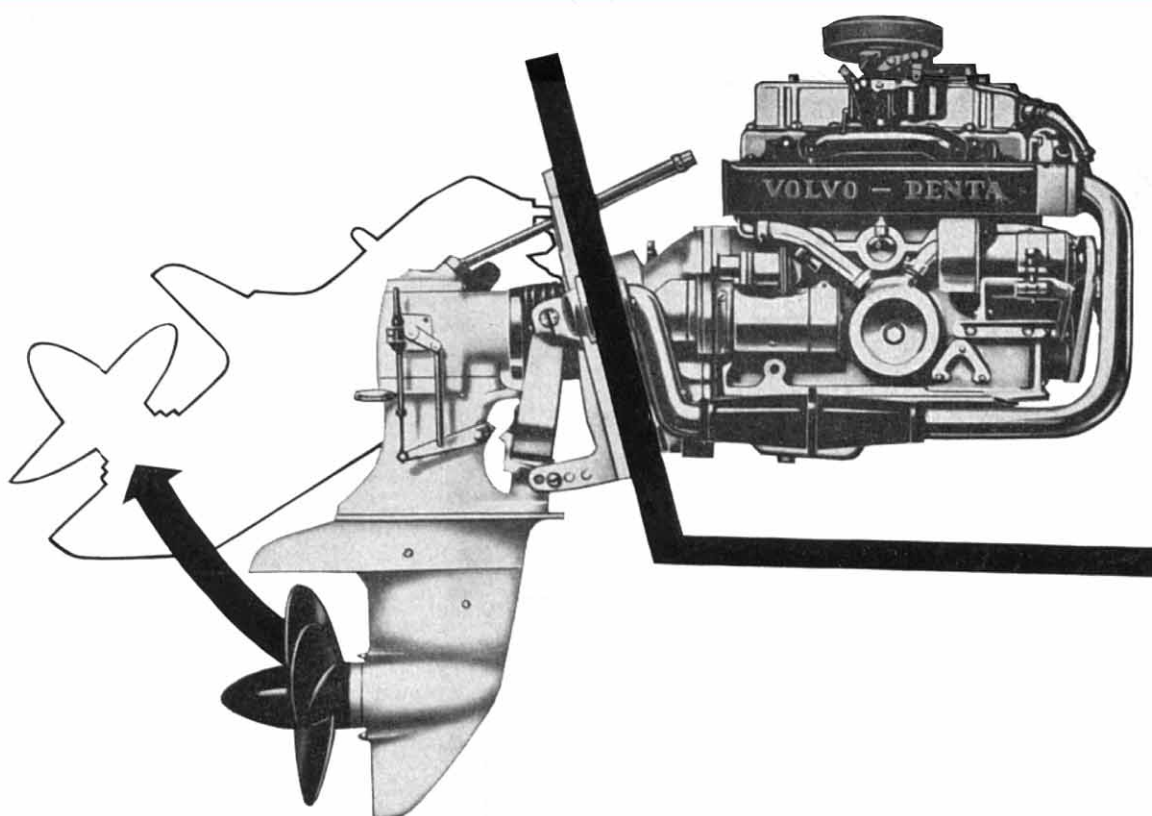
## THE INBOARD ENGINE WITH THE OUTBOARD DRIVE • 80 H. P.

The inboard engine with the outboard drive, engineered and manufactured as a single unit, presents the perfect combination of power and propulsion. Suitable for use in most high speed, lightweight boats built of wood, fiberglass or metal, the Volvo Penta Aquamatic is counterbalanced on the transom. Because of the unique transom mounting which needs no engine bed, the unit is easy to install.

The Volvo Penta Aquamatic has two major components. The 4 cylinder, inboard engine develops 80 horsepower and burns any type of good quality gasoline. The economy of operation will amaze you as the average fuel consumption is less than half that of outboard motors of comparable power.

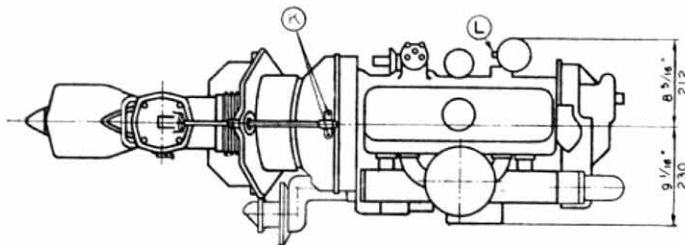
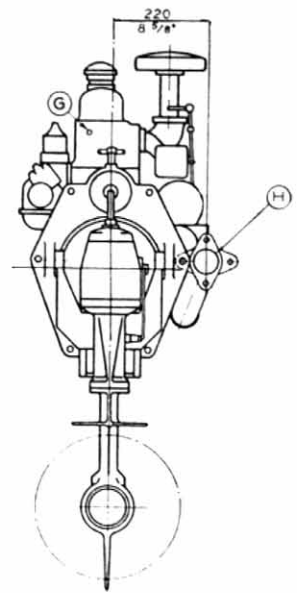
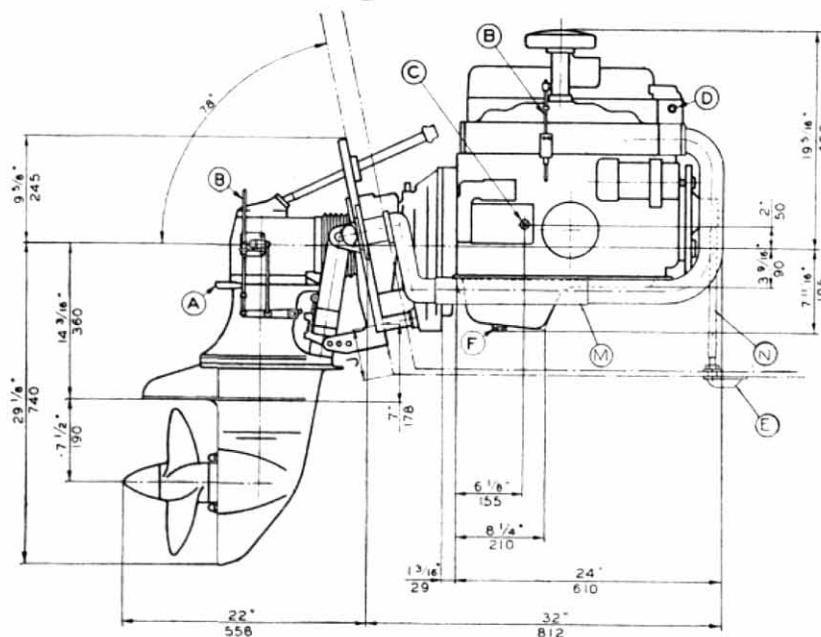
This rugged, 4 cycle engine, of course, needs no expensive oil mixture. These facts add up to savings of well over 50 % on your fuel bills compared with outboards.

The outboard drive of the Volvo Penta Aquamatic steers and overcomes underwater hazards in the same way as conventional outboards. The entire unit tilts up easily and locks in place for convenient trailing and launching. And the quick handling response of propeller steering and single lever control is yours with Aquamatic.



# VOLVO PENTA AQUAMATIC

## Dimension drawings



- A. Handle for swinging up unit
- B. Control cable for gear shift and throttle
- C. Centre of gravity
- D. Engine temperature gauge connection
- E. Water inlet
- F. Oil drain, if the installation permits
- G. Connection for oil pressure gauge
- H. Water cooled exhaust pipe
- J. Depending on size and design of boat
- K. Connection for steering cable
- L. Fuel inlet, copper pipe, outer diam.  $\frac{5}{16}$ "
- M. Exhaust rubber hose  $2\frac{1}{4}$ " (57.1)  $\times$   $2\frac{1}{2}$ " (66.7)  
L = 14 $\frac{1}{2}$ " (370)
- N. Rubber hose for water inlet  $\frac{5}{8}$ " (15.6) =  $\frac{1}{2}$ " (22.2)



## Data

Max. output, h.p. ....	80
Type of operation ....	Four-stroke
Valves ....	Overhead
Number of cylinders ....	4
Capacity, total, cc ....	1585 (97.6 cu.in.)
Bore, mm ....	79.37 (3.125")
Stroke, mm ....	80 (3.150")
Propeller ....	left-hand thread
Compression ratio ....	8.2: 1
Total weight, kg ....	212 (465 lb.)

## AB VOLVO PENTA

Box 392, Göteborg 1, Sweden

Tel. 235460

Cables: Penta